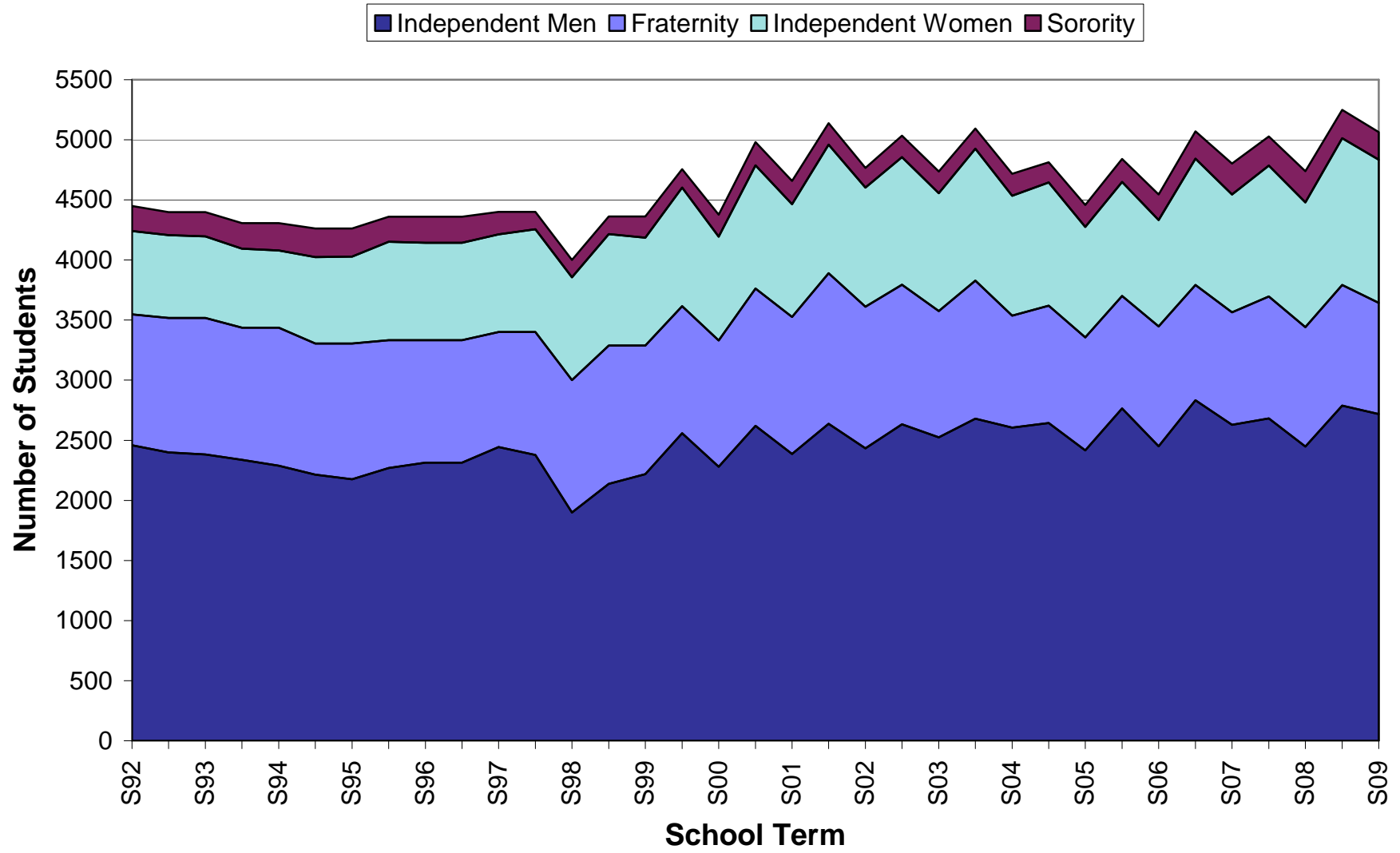


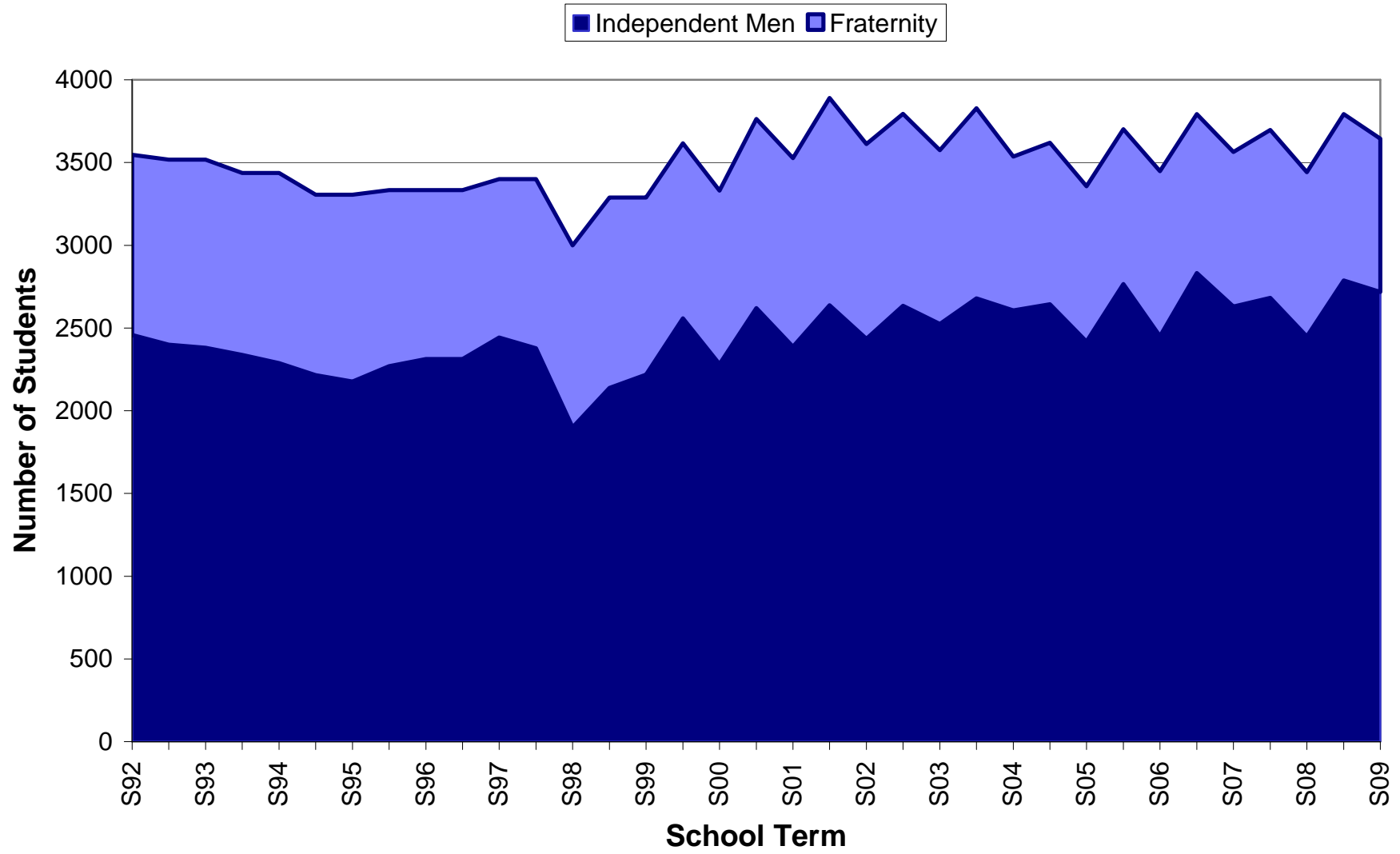
RPI Greek Student History
of
Student Body Population
and
Student Grades
from
Spring 1992 – Spring 2009

(Compiled 7/7/2009 by Jonathan Witter from DOSO OFSA Data)

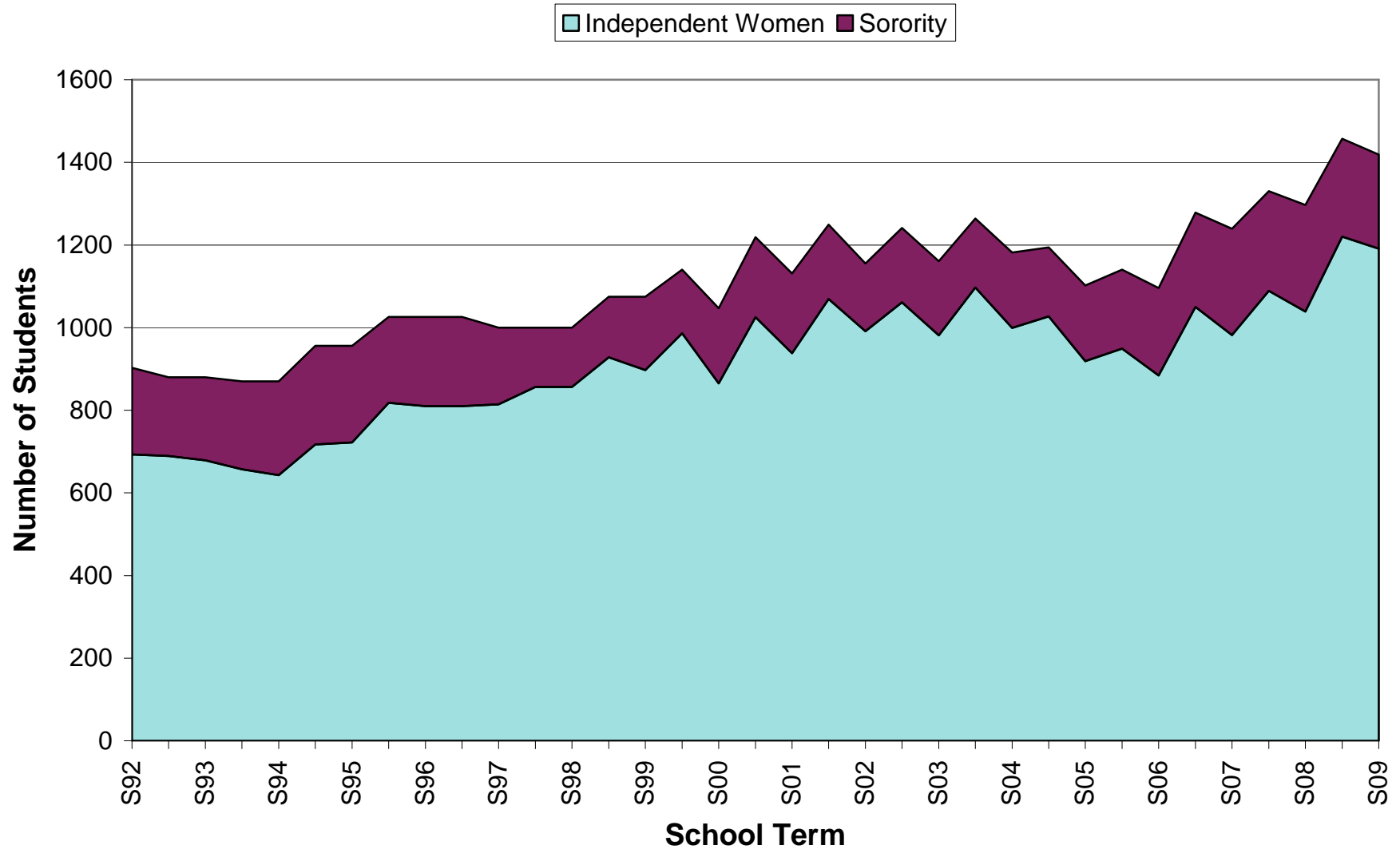
Historical Student Body Size



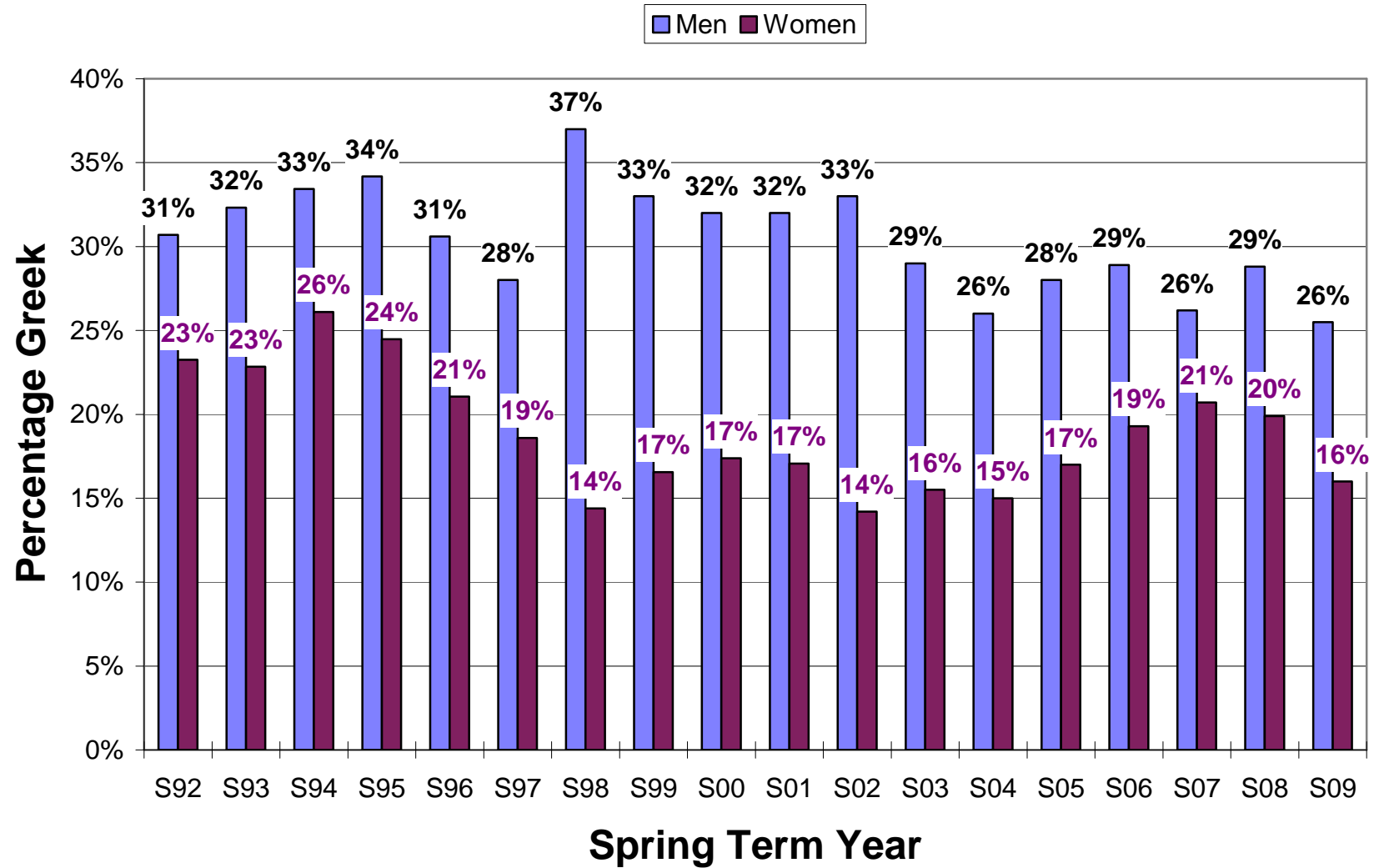
Historical Men's Student Body Size



Historical Women's Student Body Size



Percentage Greek Men and Women

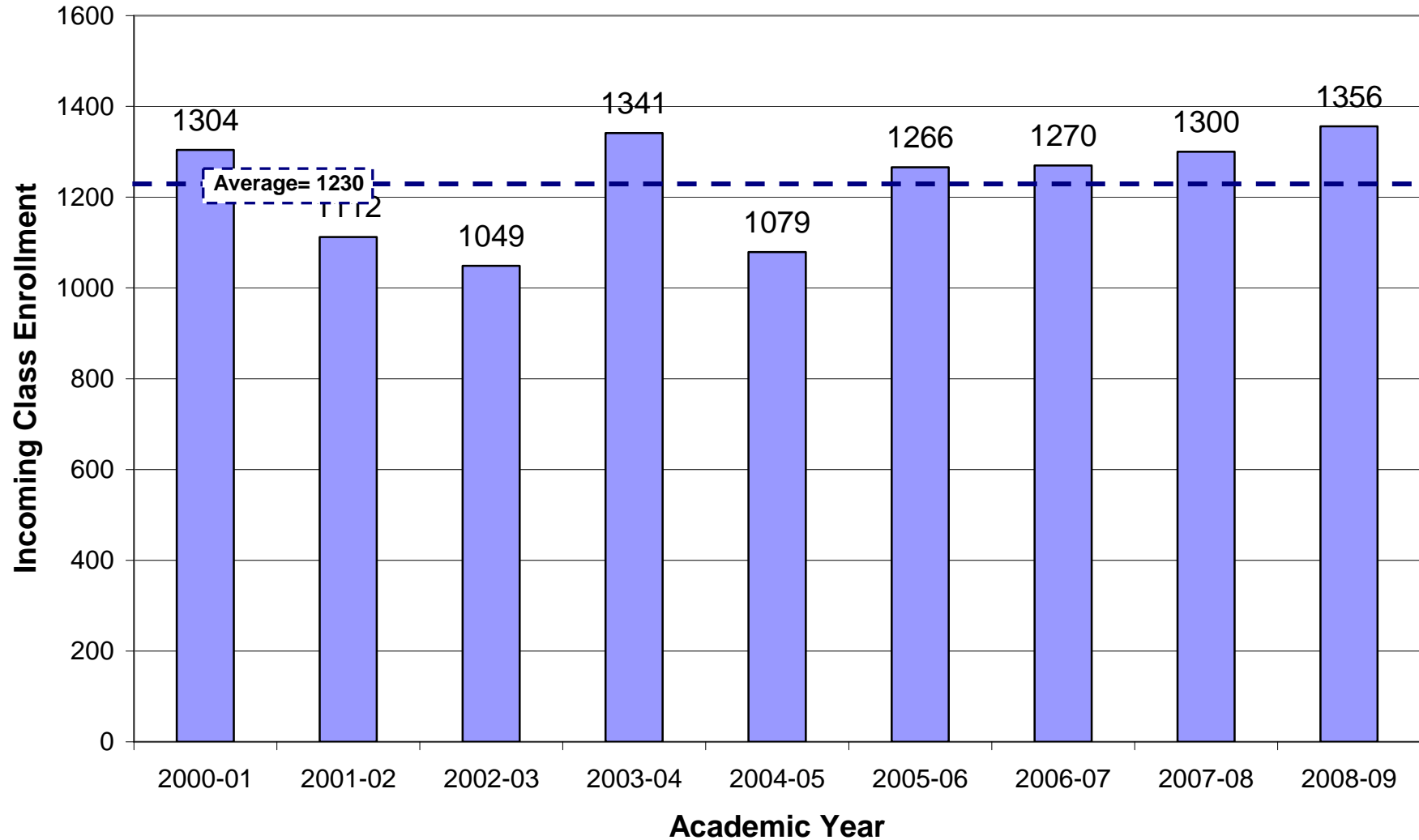


This chart is updated only with the Spring numbers

Freshman Class Enrollment

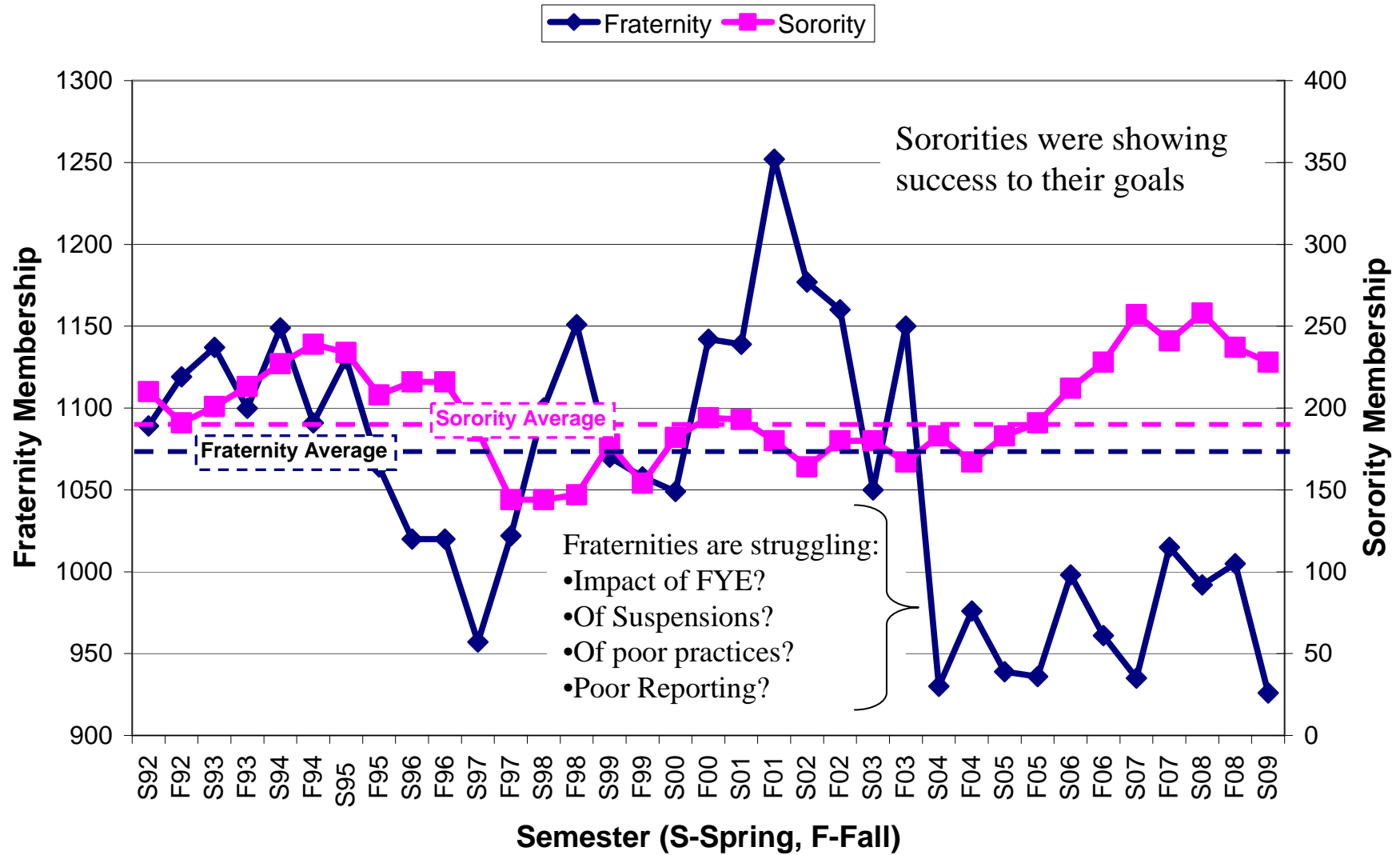
Fall Enrollment

Data from Middle States Evaluation Report – 2006 and RPI Common Data Sets



Greek Life Raw Numbers

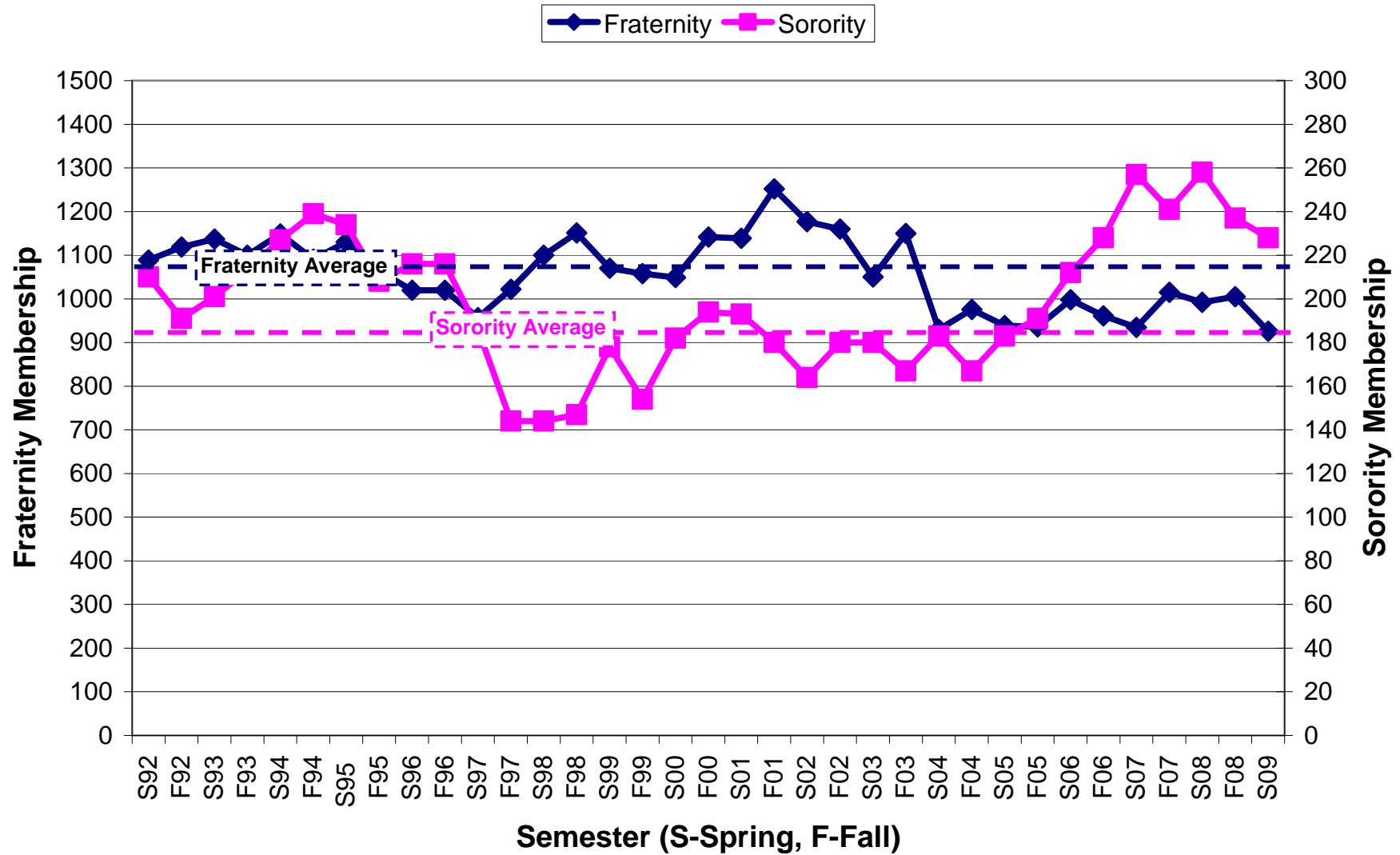
Total Greek Membership Numbers



Y axis scales so both spans are 400 students

Greek Life Raw Numbers

Total Greek Membership Numbers

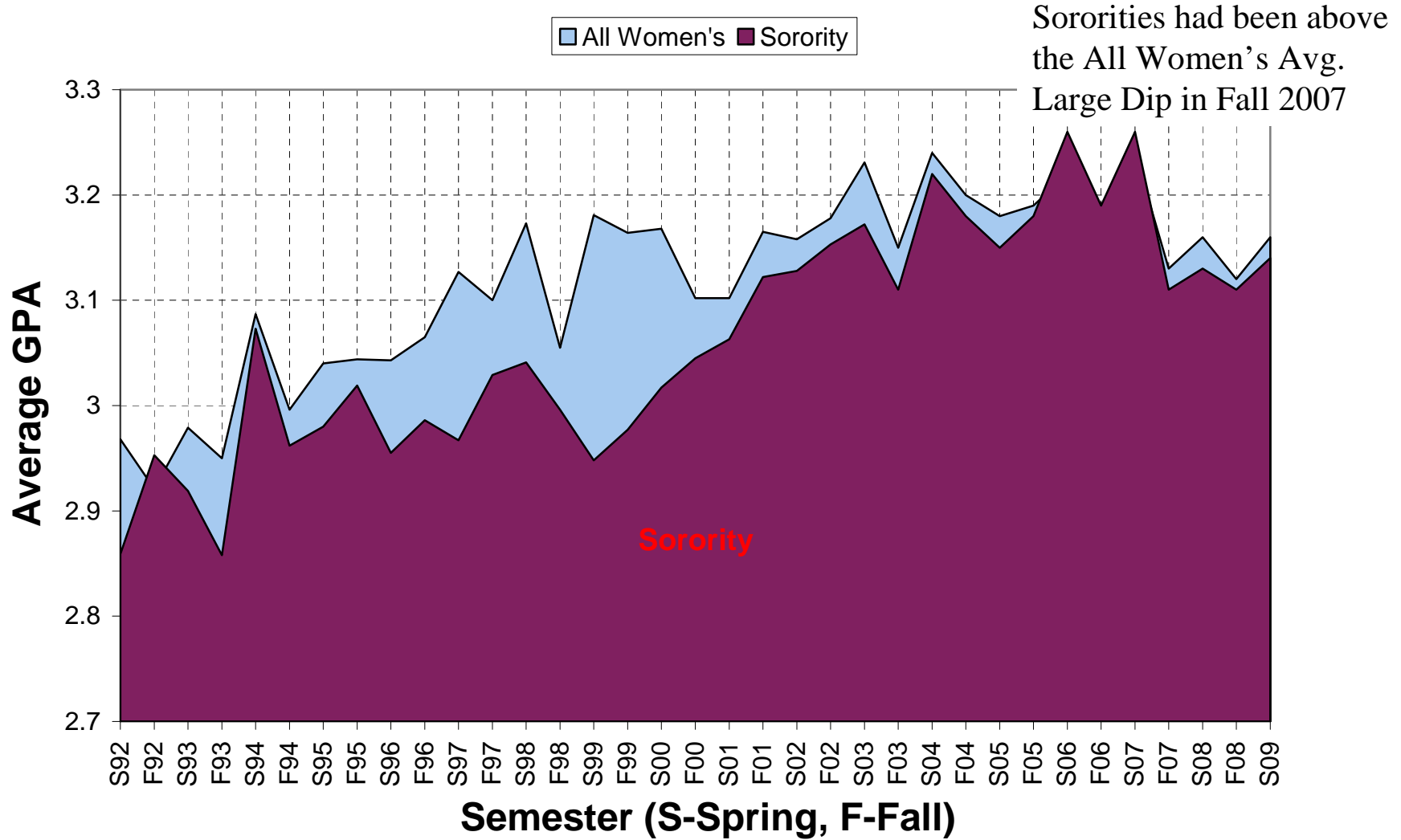


Y axis scales so maximum is proportioned to both populations ~5:1

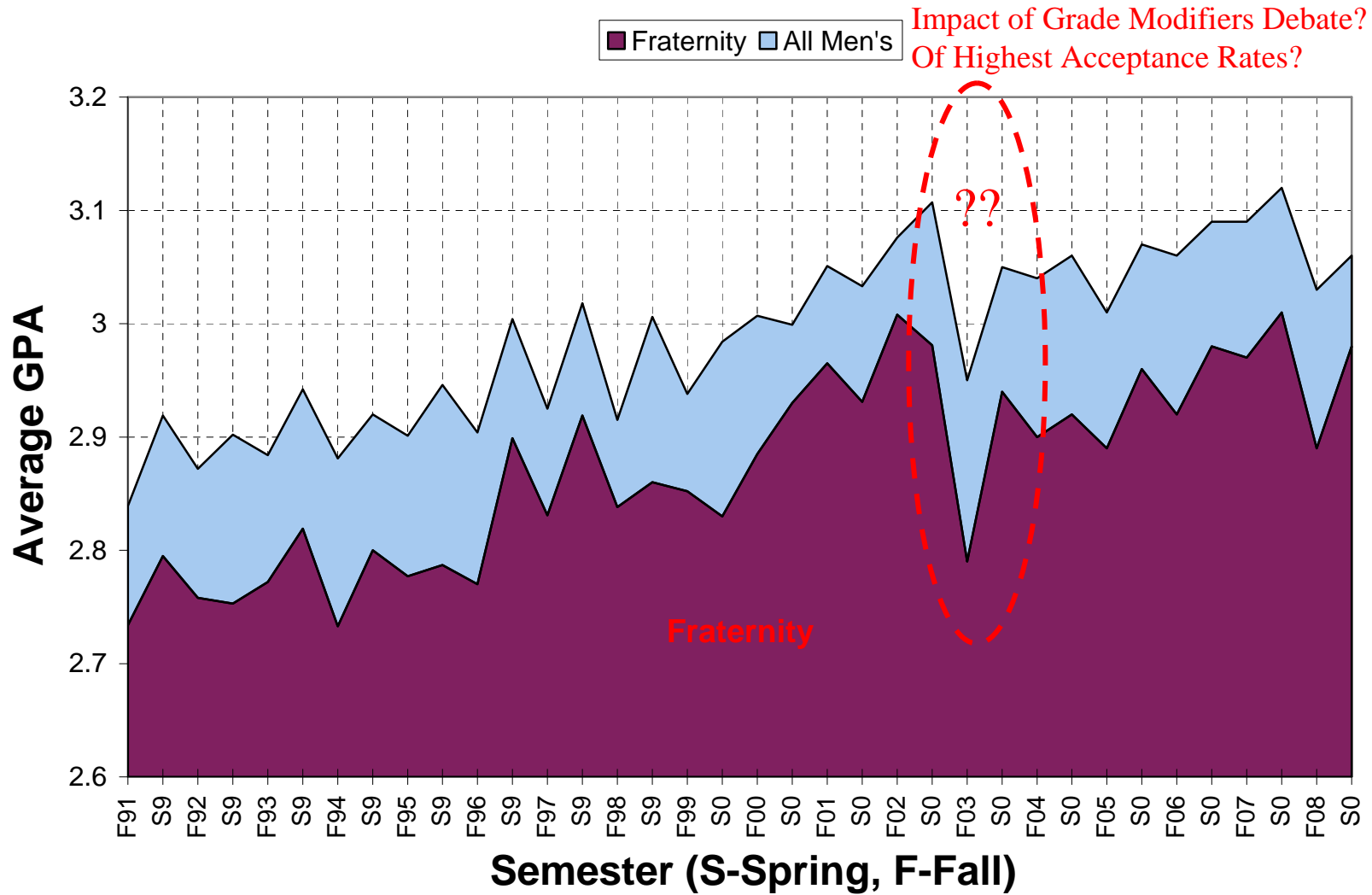
Population Conclusions

- Rensselaer Population has been rising until primarily with more women enrolled
- Women Population has grown from 20% to 28.2%
- Each Spring the independent population drops ~5%
- Percentage Greek Men has dropped from 34% to 26% (high of 37%) and lost ~200 in numbers (*some may be the loss of suspended chapters membership numbers*)
- Percentage Greek Women has dropped from a high of 26% primarily due to increased number of women students, but *the sorority numbers had actually been increasing, showing the rewards of their recruitment efforts, but drifting lower*)
- Impact of FYE and suspensions and changing demographics on the Male Greek numbers should be further studied and Fraternities need to be more earnest in goals for rush/recruitment and reporting thereof

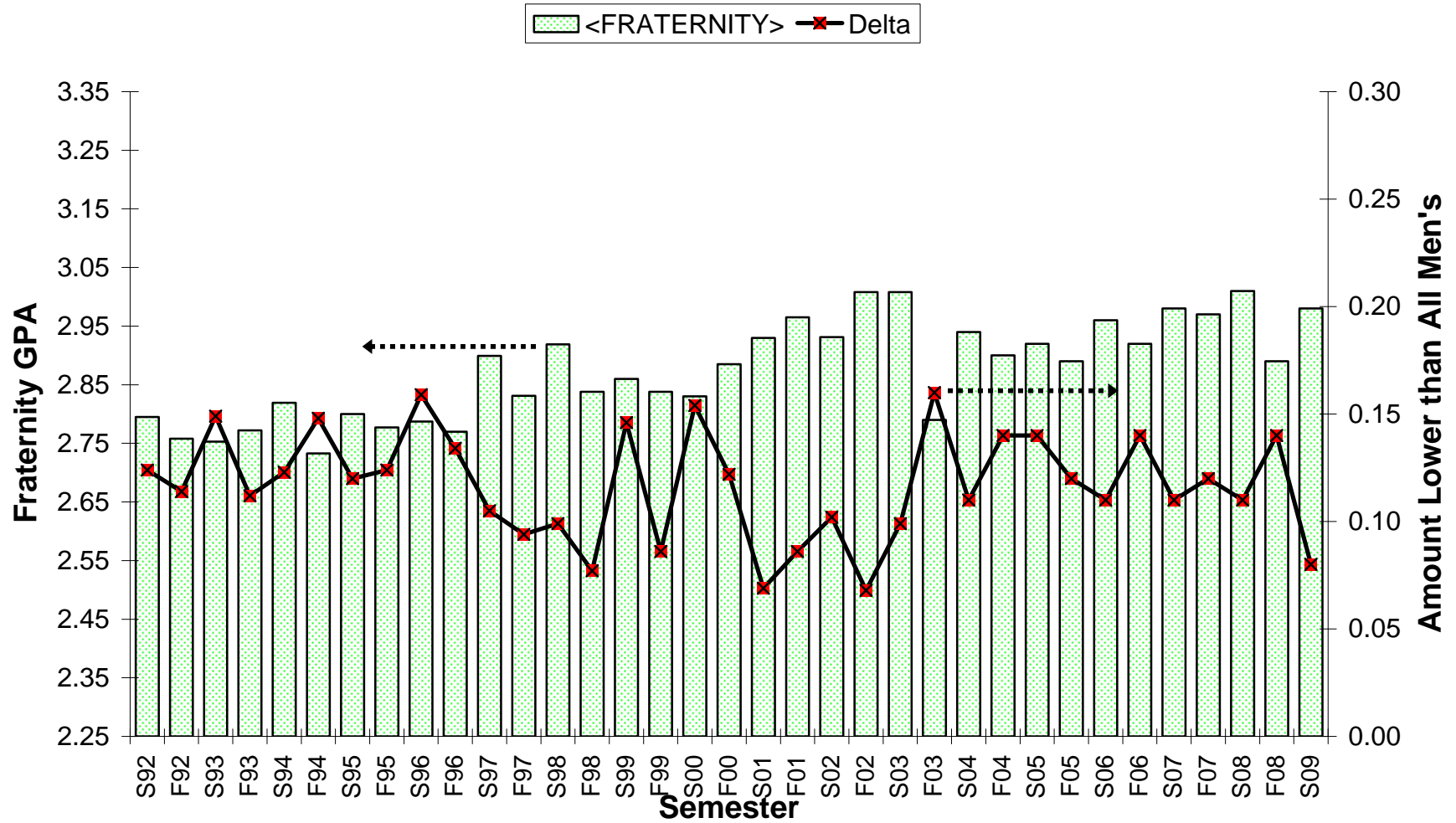
Average GPA for All Women's and Sorority



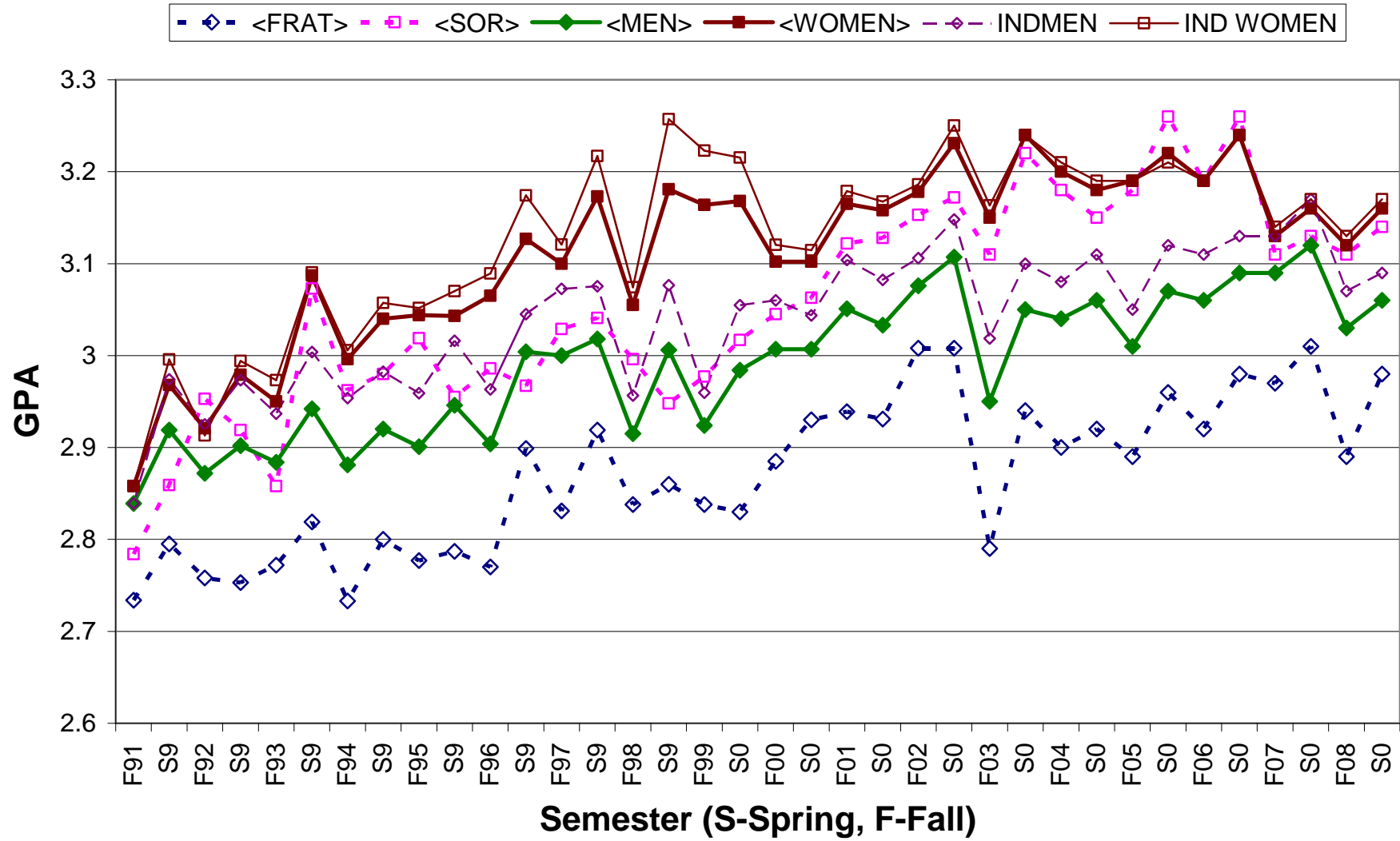
Average GPA for All Men's and Fraternity



All Men's Compared to Fraternity GPA's

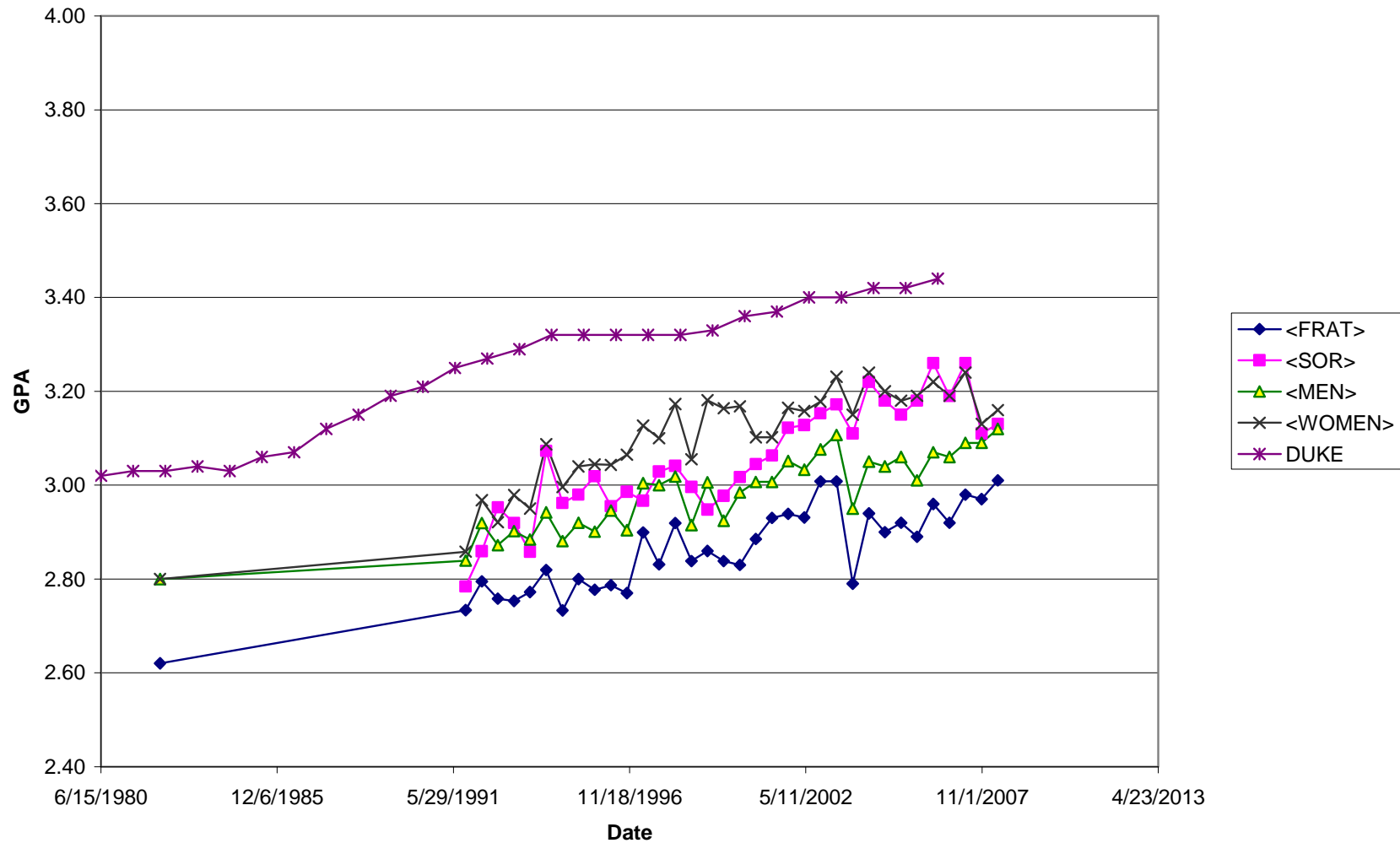


RPI GPA History



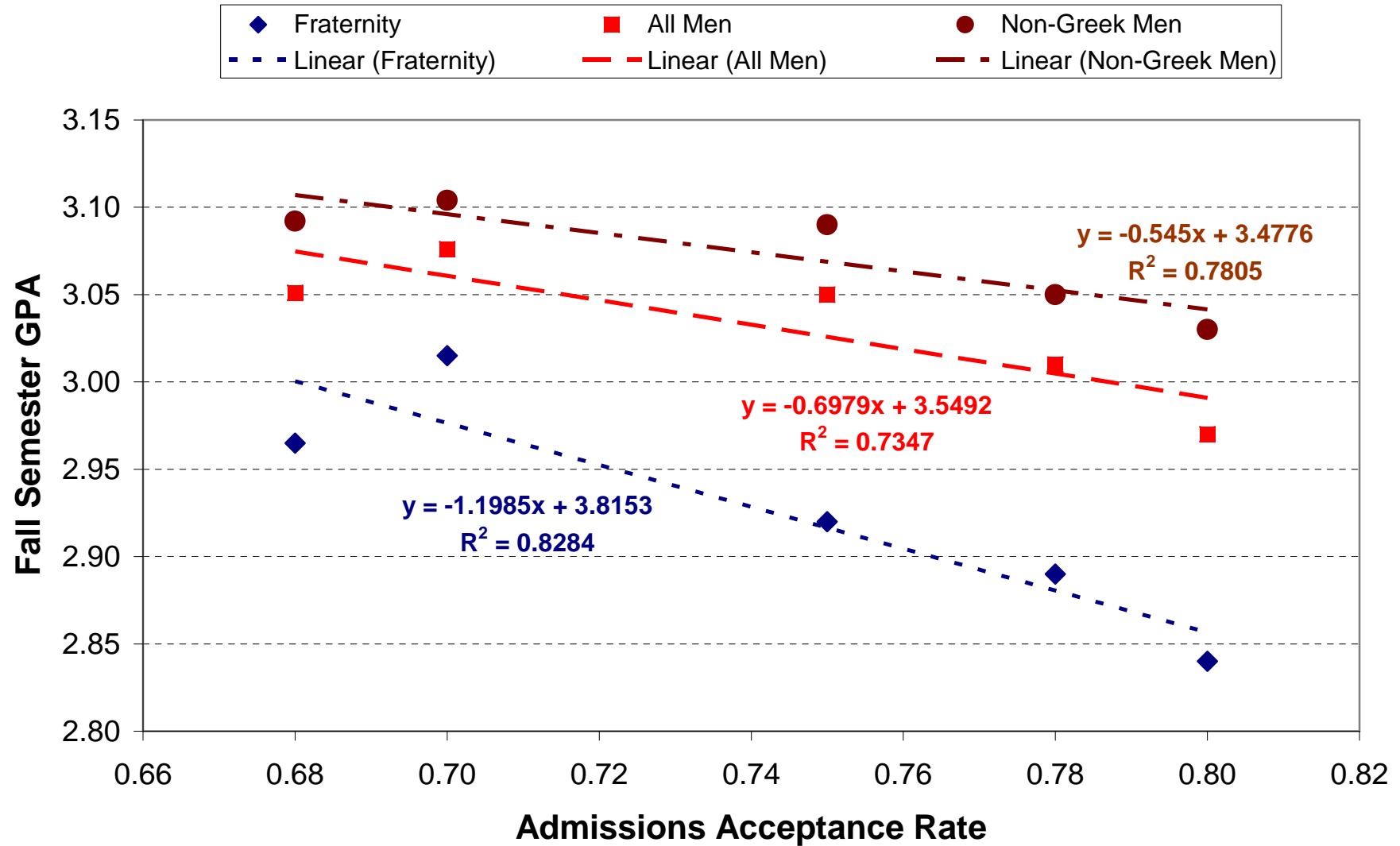
Duke & RPI Grades – Similar Inflation Trends

Duke and RPI Grades



RPI Men Grades Versus Acceptance Rate

Trends of Fall Semester GPA versus Enrollment Acceptance Rate



Data from Middle States Evaluation Report - 2006

Conclusions

- Grades have trended upwards ~ 0.14 points over a decade (despite RPI telling The Poly no indications of grade inflation)
- From 1982 to 1992 there had been < 0.1 point increase
- Fall 2003 downturn was larger than historical (0.2 versus 0.1). After this, grades seemed to stabilize and are returning to some inflation (is this the grade modifiers?)
- Fall 2007 saw a large dip in the Women GPA which may be related to higher acceptance rate for women.
- There is a loose correlation of the campus Fall Semester GPA to the admissions acceptance rate (Middle States Report 2006)
- Sorority Grades have been close to the All Women's Average and had recently surpassed it.
- Fraternity Grades had been improving relative to All Men's, but now back to historical differences of ~ 0.12 (activities?)
- The difference in the Men's GPAs is essentially only one letter grade in one class out of all the classes taken in a semester

One Way to Motivate Grades

- If everyone in your chapter did one letter better in one class GPA can go up by almost 0.2 and you'd beat the All Men's Average
- An example of if $\frac{1}{4}$, $\frac{1}{2}$, and all did "One Course, One Letter Better"
- The Sororities seem to have successfully adopted this philosophy the past few years

Grade Potential if Fraternities did One Class, One Letter Better

